

CHAIR
Julius J. Zschau
Pennington Moore Wilkinson, et al.
133 N. Fort Harrison Ave.
Clearwater, FL 33755-4020
(727) 449-9553
Fax: (727) 447-3158
jayz@penningtonlaw.com

**REAL PROPERTY,
PROBATE &
TRUST LAW
SECTION**



**THE
FLORIDA
BAR**

www.flabarRPPTL.org

CHAIR-ELECT
Rohan Kelley
Holland & Knight, LLP
One East Broward Boulevard, 13th Floor
Fort Lauderdale, FL 33301
(954) 468-7852
Fax: (954) 463-2030
rohan.kelley@hklaw.com

May 5, 2006

Dear Council Member,

**DIRECTOR, REAL PROPERTY
LAW DIVISION**
Melissa Jay Murphy
Salter Feiber Yenser Murphy, et al.
P.O. Box 357399
Gainesville, FL 32635-7399
(352) 376-8201
Fax: (352) 376-0648
melissam@salterlaw.net

Our RPPTL Section Annual Convention and Executive Council meeting will be held at the Hilton in the Walt Disney World Resort at Lake Buena Vista. This Hilton has been one of the traditional meeting places of The Florida Bar and the Real Property Probate & Trust Law Section. If you have not yet made your reservations, do so as soon as possible as our meeting is on Memorial Day weekend. The cut-off date for the group rate rooms has passed but you can still call the hotel at 800-445-8667 for reservations or check for rates at www.hilton.com.

**DIRECTOR, PROBATE AND
TRUST LAW DIVISION**
Sandra F. Diamond
Williamson, Diamond & Caton, P.A.
9075 Seminole Blvd.
Seminole, FL 33772-3150
(727) 398-3600
Fax: (727) 393-5458
sdiamond@wdclaw.com

Committee meetings will begin on Thursday, May 25th and commence on Friday, May 26th before and after the Section's CLE Seminar. Committee Chairs who have not yet scheduled committee meetings should contact Terry Hill as soon as possible concerning available space and times as well as the expected numbers of attendees. The only committee meeting space available is on Thursday morning prior to noon.

SECRETARY
William F. Belcher
P.O. Drawer T
Saint Petersburg, FL 33731-0000
(727) 821-1249
Fax: (727) 823-8043
wfbelcher@aol.com

TREASURER
John B. Neukamm
Mechanik Nuccio
101 E. Kennedy Blvd., Ste. 3140
Tampa, FL 33602-5151
(813) 276-1920
Fax: (813) 276-1560
jbn@floridalandlaw.com

Check-in and late registration for the Executive Council events will be Thursday 12 noon – 3:00 p.m. and will continue on Friday from 8:00 a.m. – 3:00 p.m. All events will be based on your sign-up sheet selections and tickets will be distributed at the registration desk. Please remember to check-in and pick up your name-tags and tickets.

LEGISLATION CHAIR
Brian J. Felcoski
Goldman, Felcoski & Stone, P.A.
2333 Ponce De Leon Blvd., Ste. 1102
Coral Gables, FL 33134-5427
(305) 446-2800
Fax: (305) 446-2819
bfcoski@gfsestatelaw.com

We will have our Welcome Reception at the Hilton, Thursday evening, May 25th from 7:00 p.m.-9:00 p.m. The RPPTL Hospitality Suite will be open from 9:30 p.m.-11:00 p.m. for cocktails or cordials.

**DIRECTOR, CIRCUIT
REPRESENTATIVES**
George J. Meyer
Carlton Fields, P.A.
P.O. Box 3239
Tampa, Florida 33601-3239
(813) 223-7000
Fax: (813) 229-4133
gmeyer@carltonfields.com

A continental style breakfast will be served from 7:30 a.m. to 9:30 a.m. on Friday. Our Convention CLE program will begin Friday at 9:30 a.m. and will continue until 3:00 p.m. We have a large group of exhibitors and sponsors. Please be sure to visit the exhibits and thank the exhibitors and sponsors. Our Luncheon & Annual Meeting program will begin at 12 noon. We will have a brief address by Kevin Shepard, Chair of the ABA Real Property Probate & Trust Law Section and Mike Rubin, incoming President of the American College of Real Estate Lawyers. Cocktails will be served from 6:00 p.m.-7:00 p.m. and dinner will begin at 7:00 p.m. The RPPTL Hospitality Suite will be open from 9:30 p.m.-11:00 p.m. for cocktails or cordials.

IMMEDIATE PAST CHAIR
Laird A. Lile
Laird A. Lile, P.A.
250 Bahia Pt.
Naples, FL 34103-3511
(239) 649-7778
Fax: (239) 649-7780
llile@lairdalile.com

PROGRAM ADMINISTRATOR
Terry L. Hill
The Florida Bar
651 E. Jefferson Street
Tallahassee, FL 32399-2300
(850) 561-5619
Fax: (850) 561-5825
thill@flabar.org

Jay Zschau Convention Letter
Page 2 of 2
May 5, 2006

We will begin Council work on Saturday with the Real Property Division and Probate and Trust Division Round Table Breakfasts from 8:00 a.m. – 10:00 a.m. We will continue the format followed at our last council meetings of dealing with routine divisional matters and proposed legislation at the round tables. The substantive matters and legislative issues and action items will be handled at the full Executive Council Meeting. The Executive Council meeting will begin at 10:00 a.m. followed by lunch at 12:30 p.m.

The balance of the afternoon on Saturday will be on your own and in the evening we will be at Disney's EPCOT for dinner and entertainment from 6:00 p.m. – 8:45 p.m. followed by dessert and a fireworks display beginning at 8:45. The RPPTL Hospitality Suite will be open from the time we return to the hotel until 11:00 p.m. for cocktails or cordials.

Sunday morning we will have a Farewell Breakfast at the hotel from 8:30 a.m. to 10:30 a.m. The "Dress" for the entire session will be resort casual. Please see the sign up sheet for additional information on the above-mentioned weekend events. Leila has made arrangements for spouse and guest events and her comments are attached.

I look forward to seeing all at the Hilton in Lake Buena Vista.

Jay Zschau

**Special Thanks to the
RPPTL Section Annual Convention Sponsors**

Overall Convention Sponsor

Attorneys' Title Insurance Fund

General Sponsors

AmSouth Bank

Ashar Group LLC

Cheswick Wright Wealth Management

Chicago Title Insurance Company

Fidelity National Title Insurance Company

First American Title Insurance Company

Howard Frazier Barker Elliott

LandAmerica

Management Planning, Inc.

Old Republic National Title Insurance

Stewart Title Guaranty Company



May 25 – May 28, 2006

Hilton, located in the WALT DISNEY WORLD® Resort

1751 Hotel Plaza Boulevard, Lake Buena Vista, Florida, United States 32830
Tel: +1-407-827-4000 Fax: +1-407-827-3890

Welcome to The **Hilton, located in the WALT DISNEY WORLD®, Resort**. The Hilton is an official hotel of Walt Disney World in Lake Buena Vista, Florida. We will enjoy exceptional facilities at a Four Star, Four Diamond resort. Take a dip in either of the two swimming pools and enjoy a workout at their health club. I look forward to a great meeting in May.

This Lake Buena Vista hotel is a step away from Downtown Disney, home of the Disney Marketplace, Pleasure Island and Disney's West Side. What's more, **complimentary**, as an official Disney hotel, the Hilton offers the exclusive **Extra Magic Hours** benefit. Each day one of the theme parks is open an hour early or stays open up to three extra hours in the evening, providing Hilton guests the opportunity to enjoy exclusive access to some of the most popular attractions at an easy, relaxed pace.

On separate sheets I have listed all the details of most of the spouse/guest events that will be offered during Annual Convention and Executive Council meeting of the RPPTL section of The Florida Bar. I look forward to sharing some fun events with you. Here is a quick recap:

Friday May 26, 2006 9:30 am – 3:30 pm

Tiffany Museum Tour, Lunch and Shopping in Winter Park

Saturday May 27, 2006 9:00 am – 1:00pm

Walt Disney – Behind the Scenes tour

Saturday May 27, 2006 2:00pm – 4:00 pm

Richard Petty Ride Along Program

Saturday May 27, 2006 6:00pm – 9:45 pm

Walt Disney World's Epcot Bistro de Paris and Illumi Nations Extravaganza!

Sunday May 28, 2006 8:30 am – 11:00 am

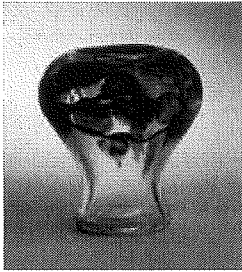
Farewell Breakfast

See you in Orlando!

Leila Zschau

Florida Bar RPPTL Spouse/Guest: \$40.00
Tiffany Museum Tour, Lunch and Shopping in Winter Park
Friday, May 26, 2006

Depart from the hotel 9:30 am - Return 3:30 pm



*Charles Hosmer Morse Museum of
American Art
445 Park Avenue North
Winter Park, FL
407-645-5311
www.morsemuseum.org*

10:00 am – Private Tour

THE CHARLES HOSMER MORSE MUSEUM OF AMERICAN ART houses the world's most comprehensive collection of the works of Louis Comfort Tiffany (1848-1933) including Tiffany jewelry, pottery, paintings, art glass, leaded-glass windows, lamps, and the chapel interior he designed for the 1893 World's Columbian Exposition in Chicago.

Over a period of almost 50 years, Hugh and Jeannette McKean amassed for the Morse Museum a collection of works by Louis Comfort Tiffany that is unsurpassed in its breadth and depth. For this large installation in celebration of the Museum's 10th anniversary at its Park Avenue location, the Morse presents stunning works from the collection that have not been on view in recent years or which have never been exhibited in these galleries. The objects include a dozen windows, some designed for the country's most elite homes of the day.



12:00 pm – 1:30 pm

**Lunch
at
Park Plaza Gardens
on
Park Avenue
in
Winter Park**

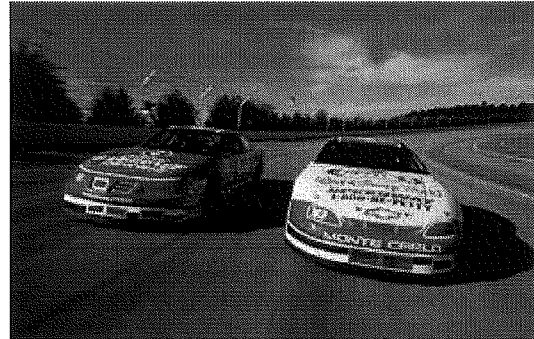
1:30 pm – Shopping in Winter Park

2:30 pm - 3:00 pm – Bus returns to the Hotel

***Florida Bar RPPTL Richard Petty Ride Along Program \$95.00
Saturday, May 27, 2006***

3:00 PM - 4:00PM Plan to arrive by 2:30 pm. It is a 15-minute drive from the hotel.
Talk to your fellow members to carpool for this fabulous experience!

Suit up...climb in...and hang on! Strap in for a ride in a 600 horsepower engine racecar. The Walt Disney World Speedway is home to the Richard Petty Driving Experience where racing fans can feel the power and speed that has made stock car racing the most popular sport in the world.



Experience a real life racing thrill when you ride shotgun in a two-seat stock car driven by a professional instructor for a three lap Nascar Nextel Cup-style Qualifying Run at a maximum speed of 145 miles per hour in the *Ride Along Program*. After this exhilarating ride, you can share your experience in Pit Road as you wait for others to take their turns.

Ride Along Program

There is an average of 20 rides per hour for the *Ride Along Program*. The time from when you are suited up and complete the ride is approximately five minutes.

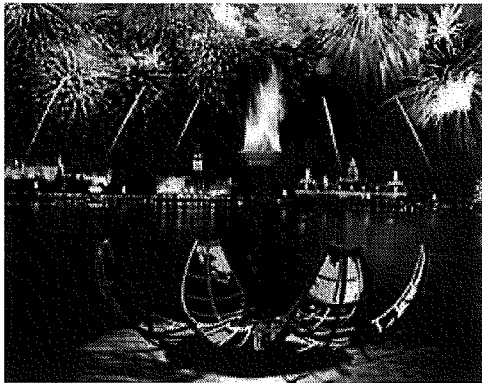
Notes:

- ◆ You must be at least 16 years of age to participate in the *Ride Along Program*.
- ◆ This activity is mostly outdoors. All participants are provided a regulation helmet, safety harness, neck guard and driver's suit. Participants will need to wear socks, closed-toe shoes and clothes that will be comfortable under the driver's suit.
- ◆ The cars do not have doors, so participants must have the ability to climb through a 15" high by 30" wide window that sits 36" from the ground. As a general rule, people who are less than 6' 8" and 280 pounds can participate. However, these numbers can vary according to an individual's flexibility and weight distribution.
- ◆ Participants will be asked to sign a liability waiver on-site..

Florida Bar RPPTL Epcot Extravaganza! \$150.00
Walt Disney World's Epcot Bistro de Paris and IllumiNations
Saturday, May 27, 2006

6:00 PM	Buses leave Hilton Hotel
6:00-6:30PM	Transfer to Backstage Epcot
6:30-7:00PM	Cocktail Reception at <i>Bistro de Paris</i>
7:00-8:15PM	Exclusive dinner at <i>Bistro de Paris</i>
8:30-9:30PM	Exclusive dessert reception and viewing of <i>IllumiNations</i> at the <i>United Kingdom Lower Terrace</i>
9:30-9:45PM	Return transfer to the hotel

Upon arrival at Epcot, we will be escorted to *World Showcase*. *World Showcase* is a celebration of the cultures and people of the world, hosting eleven countries and featuring authentic cuisine, entertainment and merchandise. *World Showcase* is a celebration of the cultures and people of the world, highlighting eleven countries and featuring authentic cuisine and entertainment. This evening, we will enjoy a fabulous dinner at *Bistro de Paris*



At 8:30PM, following our dinner, we will gather and be escorted to outside to the *United Kingdom Lower Terrace* overlooking the lagoon, will be reserved exclusively for us. This plaza is located on the lagoon and has a great viewing area for *IllumiNations*. A plant wall will be used to create a private area for our group. Here, we will enjoy a wonderful coffee and dessert reception while watching *IllumiNations*, the nightly Epcot spectacular.

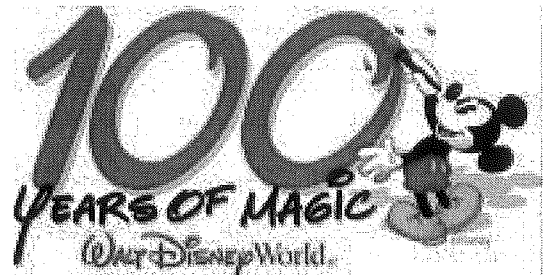
Each evening, the sky erupts with light and fire as *IllumiNations* pays tribute to the planet we all call home. This one-of-a-kind show tells its story and touches the spirit by combining video technology, water fountains, lasers, special lighting effects and pyrotechnics, all programmed to an original musical score -- creating the perfect finish to your Epcot event.

At the conclusion of this wonderful evening, deluxe vehicles will be standing by backstage to return us to the Hilton hotel.

Florida Bar RPPTL 2006 Disney Institute \$130.00
Behind-the-Scenes Tour - Inspiration through Walt's Eyes
Saturday, May 27, 2006

9:00-9:30AM	Transfer to Walt Disney World
9:30AM-12:30PM	Exclusive <i>Inspiration through Walt's Eyes</i> tour
12:30PM-1:00PM	Return transfer to the hotel

For more than 30 years, people have traveled from around the globe to visit Walt Disney World. Many people who grew up watching "Uncle Walt" on TV every Sunday evening knew him as a dreamer and doer. The name "Walt Disney" is synonymous with Mickey Mouse, classic movies and theme parks. What many people aren't aware of however, are the stories behind the stories; the events and milestones in Walt Disney's life which inspired many of the fine details around the Walt Disney World Resort.



During this three hour adventure, your facilitators will share stories about Walt's life and career. Learn about the events that inspired Walt, driving him to greater heights. Utilizing the Walt Disney World Resort, you will discover not only how Walt Disney was inspired himself, but also how he inspired those around him. Journey to places most guests never get to see for an incredible and entertaining experience you won't soon forget.

Disney MGM Studios

The Sorcerer's Hat – Discover unknown facts surrounding the icon that is at the center of the 100 Years of Magic Celebration.

Chinese Theater – Hear stories from a "grand" Disney premiere at this theater in Hollywood.

Sunset Boulevard – Explore Walt Disney's legacy in Hollywood – the city he helped define – and how Tinseltown made him into an American icon.

Animation Building – Venture backstage to see how the Disney Studios got its start.



Magic Kingdom Park

Main Street, USA – Learn the "language of vision" spoken by Disney Imagineers as they design three-dimensional stories such as this turn-of-the-century location inspired by Walt's childhood.

Other Backstage Areas

Disney's Central Shops – Journey backstage to the place where the "Can Do People" create everything from parade floats to Audio-Animatronics figures.

Notes:
<ul style="list-style-type: none"> ◆ Participants must be at least 16 years old and carry government issued photo identification. ◆ This tour involves walking in some locations. Participants are encouraged to wear comfortable shoes and dress for the weather. ◆ Theme park admission is not included nor required.



RPPTL Convention CLE Seminar
May 26, 2006
Hilton in the Walt Disney World Resort
Orlando, Florida



The Florida Bar Real Property, Probate & Trust Law Section
Presents the RPPTL Convention CLE Seminar

Course # 26006

Program Chair	Robert Freedman, Tampa
9:30 a.m. – 9:35 a.m.	Welcome and Introduction
9:35 a.m. – 10:35 a.m.	Preservation and Development of Interests in Undeveloped Tenancy-in-Common Property David J. Dietrich, Billings, Montana Wilhelmina Kightlinger, Tampa
10:35 a.m. – 10:50 a.m.	Break
10:50 a.m. – 11:05 a.m.	Life Settlements: Protection of Fiduciaries and Professional Trustees Jon Mendelsohn, Maitland Jason Mendelsohn, Maitland
11:05 a.m. – 12:05 p.m.	The USA Patriot Act and Real Estate: An Update Kevin L. Shepherd, Baltimore
12:05 p.m. – 1:30 p.m.	Lunch (on your own)
1:30 p.m. – 2:00 p.m.	Visit with Convention Exhibitors
2:00 p.m. – 3:00 p.m.	The Ethics of Negotiation: Are There Any? Conflicts of Interest, Liability to Clients, and Potential Liability to Third Parties in Real Estate and Probate Transactions Michael Rubin, Baton Rouge, Louisiana G. Thomas Smith, Pensacola Sheila Tuma, Tallahassee

► **Costs.** There cost for the RPPTL Convention Seminar is \$105. Please sign up for the seminar on the RPPTL Section Annual Convention Sign-Up / Registration Sheet which can be found on the RPPTL Section website at www.flabarrpptl.org .

CLE Credit	
Course Level: Intermediate	Course # 26006
CLER Program (Max. Credit: 4.5 hours)	Certification Program (Max. Credit: 2.5 hours)
General: 4.5 hours Ethics: 1.0 hours	Real Estate: 2.5 hours Wills, Trusts, & Estates: 1.0 hour Elder Law: 1.0 hour

Real Property, Probate & Trust Law Section	
Chair	: Julius J. Zschau, Clearwater
Chair-elect	: Rohan Kelley, Ft. Lauderdale
Program Chair:	Rob Freedman, Tampa

Please sign up for this seminar on the RPPTL Section Annual Convention Sign-Up / Registration Sheet which can be found on the RPPTL Section website at www.flabarrpptl.org .

**RPPTL Section Annual Convention & Executive Council Meeting – ORLANDO 2006
Sign-Up / Registration Sheet***

Please complete and return this registration form before **May 15, 2006**

MAIL YOUR CHECK, payable to The Florida Bar, with a completed copy of this sheet, to **The Florida Bar 651 East Jefferson Street Tallahassee, Florida 32399-2300**. **CREDIT CARD:** If paying with your VISA or MasterCard please FAX the completed form to Terry Hill at fax number (850) 561-5825. Thank you!

Your Name: _____ Florida Bar #: _____

Address: _____ City/State/Zip: _____

Your Guests Name (First & Last): _____

MASTERCARD VISA **Card Number:** _____

Name on Card: _____

Expiration Date: ____ / ____ (Month / Year) **Signature:** _____

<u>Thursday, May 25, 2006</u>		Event Price		# Attending	Amount
12:00 noon – 5:00 p.m.	Committee Meetings			_____ =	_____
7:00 p.m. – 9:00 p.m.	Welcome Reception	\$45.00/each	x	_____ =	_____
<u>Friday, May 26, 2006</u>					
7:30 a.m. – 9:30 a.m.	Breakfast	\$15.00/each	x	_____ =	_____
8:00 a.m. – 9:30 a.m.	Committee Meetings			_____ =	_____
8:00 a.m. – 4:00 p.m.	Exhibitor Hall Open			_____ =	_____
9:30 a.m. – 3:00 p.m.	RPPTL Section CLE Seminar	\$105.00/each	x	_____ =	RP043 _____
9:30 a.m. – 3:30 p.m.	Spouse/Guest Tiffany Museum			_____ =	_____
	Tour, Lunch & Shopping	\$40.00/each	x	_____ =	_____
12:00 noon – 1:30 p.m.	Lunch & Annual Meeting	\$40.00/each	x	_____ =	_____
7:00 p.m. – 10:00 p.m.	Reception, Dinner & Awards	\$95.00/each	x	_____ =	_____
<u>Saturday, May 27, 2006</u>					
8:00 a.m. – 10:00 a.m.	Probate Breakfast	\$20.00/each	x	_____ =	_____
8:00 a.m. – 10:00 a.m.	Real Property Breakfast	\$20.00/each	x	_____ =	_____
9:00 a.m. – 10:00 a.m.	Spouse/Guest Breakfast			_____ =	_____
	with Disney Characters	\$15.00/each	x	_____ =	_____
9:00 a.m. – 1:00 p.m.	Disney Behind-the-Scenes			_____ =	_____
	Tour (space is limited)	\$130.00/each	x	_____ =	_____
10:00 a.m. – 12:00 p.m.	Executive Council Meeting	Members Only		_____ =	<u>\$0</u>
12:00 noon – 1:30 p.m.	Executive Council Lunch	\$30.00/each	x	_____ =	_____
2:30 p.m. – 4:00 p.m.	Richard Petty Ride Along			_____ =	_____
	Program (space is limited)	\$95.00/each	x	_____ =	_____
6:00 p.m. – 10:00 p.m.	Farewell Dinner & Epcot	\$150.00/each	x	_____ =	_____
	w/ Fireworks			_____ =	_____
<u>Sunday, May 28, 2006</u>					
8:30 a.m. – 10:30 a.m.	Farewell Breakfast	\$ 20.00/each	x	_____ =	_____

TOTAL \$ _____
Registrations RP005
Conv Seminar RP043

*There will be a \$25 administrative fee held from any full or partial refund request made in writing (via e-mail thill@flabar.org) prior to 5:00 p.m. on May 18, 2006. There will be no full or partial refunds after 5:00 p.m. Thursday, May 18, 2006 as the final numbers to the hotel and other venues will be due.

Convention Exhibitors

Booth 1

LandAmerica

20 N. Orange Blvd., Suite 500
Orlando, Florida 32801
Phone: (407) 835-2625
Fax: (407) 481-2360

Principle: Cary Williams, Larry Furlong, Gene Rebadow, Janet Legen
Alternates:

Services: Title Insurance

Booth 2

Florida Lawyers Mutual Insurance Company

3504 Lake Lynda Drive, Suite 325
Orlando, Florida 32817
Phone: (407) 382-1400
Fax: (407) 382-3130

Represented by: Mary F. Jones

Services: Lawyers professional liability insurance and court bonds.

Booth 3

Grand Bank & Trust of Florida

3601 PGA Boulevard
Palm Beach Gardens, Florida 33410
Phone: (561) 207-6736
Fax: (561) 207-6929

Represented by: Richard Wilson, John Patten

Services: Grand Bank & Trust Of Florida's Service-west Palm Beach Based Community Bank Offering To Hold Real Estate, Mortgages And Related Investments In Self Directed Ira's Thru Its Trust Division.

Booth 4

Cheswick Wright Investors Service

(a subsidiary of Wright Investors Service)
131 Rowayton Avenue
Rowayton, CT 06853
Phone: (203) 783-4320
Fax: (203) 783-4401

Principal: Diane Timpany; David P. Tuttle;
Carol Cheswick Ross and Susan C. Brewer
Alternates:

Services: Investment advisory programs for professional fiduciaries, individuals, and institutions. Special fee schedules for members of the RPPTL Section.

Booth 5

Fidelity National Title

15951 SW 41st Street, Suite 800
Weston, Florida 33331

Principal: Jill Baron

Alternates: Tracy Stape, Betty Crovato

Services: Fidelity National Title is the premier provider of products, services, and solutions to the real estate industry and the nation's largest title insurance company.

Booth 6

Community Foundations of Florida

200 South Biscayne Boulevard
Miami, Florida 33131
Phone: (305) 371-2711
Fax: (305) 371-5342

Principle: Terri Murru

Services: Community Foundations assisting professional advisors; meeting the philanthropic goals of charitable clients through the creation of endowment funds and other giving vehicles offering enhanced tax benefits.

Booth 7

Florida Lawyers Support Services

Post Office Box 568157
Orlando, Florida 32856-8157
Phone: (407) 515-1501
Fax: (407) 515-1504

Represented by: Erin Brennan

Services: Florida Lawyers Support Services, Inc., (FLSSI) is a non-profit corporation formed in 1981 to assist Florida Lawyers practicing in Real Property, Probate and Trust Law.

Booth 8

Interactive Legal Systems

10 Highland Park Village, Ste 200
Dallas, Texas 75205
(888) 315 0872

Represented by: Nicole S. Splitter

Services: Interactive Legal Systems presents Wealth Transfer Planning, a state-of-the-art drafting program that enables practitioners to produce wills, trusts and advice in an expert and extremely cost efficient way.

Booth 9

Stewart Title Guaranty Company

3401 West Cypress Street
Tampa, Florida 33607-5007
Phone: (813) 876-0617
Fax: (813) 769-3329

Principals: Mark Wanich & Wilhelmina Kightlinger

Alternate: Julie Lavin

Services: Stewart Title Guaranty Company is more than a 100 year old company and is one of the largest title insurance underwriters in the nation, handling both commercial and residential transactions.

Booth 10

Citigroup Trust

153 E. 53rd Street, 23rd Floor
New York, New York 10022
Phone: (212) 559-3501
Fax: (212) 559-0013

Principal: Lisa Rainforth

Alternates: Karen Savage, Tammy Nabergall & Tim Powers

Services: Citigroup Trust offers clients sophisticated and integrated estate planning solutions, fiduciary and investment management services, and an open architecture platform.

Booth 11

Lawgic, LLC

2251 St. Johns Bluff Road
Jacksonville, Florida 32250
Phone: (904) 223-2223
Fax: (904) 223-2224

Represented by: Bruce Grewell; Mark Willard

Services: Lawgic's combines an intuitive question-answer process with legal software research and strategic analysis to enable users to create complex, elegantly written trust & estate documents.

Booth 12

ProDoc, Inc.

962 Coronado Blvd
Universal City, Texas 78148
Phone: (210) 582-2491
Fax: (210) 477-1261

Principal: Alan Schoolcraft

Alternates:

Services: ProDoc is the completely integrated and affordable productivity system for small law firms. ProDoc features thousands of automated forms in 13 areas of law.

Booth 13

Old Republic National Title Insurance Company

600 West Hillsboro Boulevard, Suite 110
Deerfield Beach, Florida 33441
Phone: (954) 421-4599
Fax: (954) 421-9366

Principle: Julie Susik, Pete Bramm

Alternate: Justin Nepola, Renee Becker, David Zide

Services: Old Republic National Title celebrates over 90 years of dedicated excellence by offering a complete line of residential and commercial title insurance products and services through a network of title plants and policy issuing agents throughout Florida.

Booth 14

Bayview Financial Exchange

4425 Ponce De Leon Boulevard, 4th Floor
Coral Gables, Florida 33146
Phone: (305) 646-6404
Fax: (305) 646-9987

Principle: Stephen A. Wayner

Alternate: Suzanne Hastings

Services: Experience, Security, Service and Price; When selling business or investment real property; defer capital gains tax by using Bayview as your Qualified Intermediary. www.Bayview1031.Com

Booth 15

Ashar Group, LLC

555 Winderley Place, #300
Maitland, Florida 32751
Phone: (407) 772-1818
Fax: (407) 386-6602

Principal: Jon B. Mendelsohn

Alternate: Jason T. Mendelsohn

Services: Ashar Group is an independent unbiased and comprehensive solution specialist in the life settlement market. We provide a non-binding valuation of life insurance policies for estate and business planning clients.

**RPPTL Section Annual Convention & Executive Council Meeting – ORLANDO 2006
Sign-Up / Registration Sheet***

Please complete and return this registration form before **May 15, 2006**

MAIL YOUR CHECK, payable to **The Florida Bar**, with a completed copy of this sheet, to **The Florida Bar 651 East Jefferson Street Tallahassee, Florida 32399-2300**. **CREDIT CARD:** If paying with your **VISA** or **MasterCard** please FAX the completed form to **Terry Hill** at fax number **(850) 561-5825**. Thank you!

Your Name: _____ Florida Bar #: _____

Address: _____ City/State/Zip: _____

Your Guests Name (First & Last): _____

MASTERCARD **VISA** **Card Number:** _____

Name on Card: _____

Expiration Date: ____ / ____ (Month / Year) **Signature:** _____

<u>Thursday, May 25, 2006</u>		Event Price		# Attending	Amount
12:00 noon – 5:00 p.m.	Committee Meetings				
7:00 p.m. – 9:00 p.m.	Welcome Reception	\$45.00/each	x	_____ =	_____
<u>Friday, May 26, 2006</u>					
7:30 a.m. – 9:30 a.m.	Breakfast	\$15.00/each	x	_____ =	_____
8:00 a.m. – 9:30 a.m.	Committee Meetings				
8:00 a.m. – 4:00 p.m.	Exhibitor Hall Open				
9:30 a.m. – 3:00 p.m.	RPPTL Section CLE Seminar	\$105.00/each	x	_____ =	RP043 _____
9:30 a.m. – 3:30 p.m.	Spouse/Guest Tiffany Museum				
	Tour, Lunch & Shopping	\$40.00/each	x	_____ =	_____
12:00 noon – 1:30 p.m.	Lunch & Annual Meeting	\$40.00/each	x	_____ =	_____
7:00 p.m. – 10:00 p.m.	Reception, Dinner & Awards	\$95.00/each	x	_____ =	_____
<u>Saturday, May 27, 2006</u>					
8:00 a.m. – 10:00 a.m.	Probate Breakfast	\$20.00/each	x	_____ =	_____
8:00 a.m. – 10:00 a.m.	Real Property Breakfast	\$20.00/each	x	_____ =	_____
9:00 a.m. – 10:00 a.m.	Spouse/Guest Breakfast				
	with Disney Characters	\$15.00/each	x	_____ =	_____
9:00 a.m. – 1:00 p.m.	Disney Behind-the-Scenes				
	Tour (space is limited)	\$130.00/each	x	_____ =	_____
10:00 a.m. – 12:00 p.m.	Executive Council Meeting	Members Only			_____ \$0
12:00 noon – 1:30 p.m.	Executive Council Lunch	\$30.00/each	x	_____ =	_____
2:30 p.m. -4:00 p.m.	Richard Petty Ride Along				
	Program (space is limited)	\$95.00/each	x	_____ =	_____
6:00 p.m. – 10:00 p.m.	Farewell Dinner & Epcot	\$150.00/each	x	_____ =	_____
	w/ Fireworks				
<u>Sunday, May 28, 2006</u>					
8:30 a.m. – 10:30 a.m.	Farewell Breakfast	\$ 20.00/each	x	_____ =	_____

TOTAL \$ _____
Registrations RP005
Conv Seminar RP043

*There will be a \$25 administrative fee held from any full or partial refund request made in writing (via e-mail thill@flabar.org) prior to 5:00 p.m. on May 18, 2006. There will be no full or partial refunds after 5:00 p.m. Thursday, May 18, 2006 as the final numbers to the hotel and other venues will be due.